

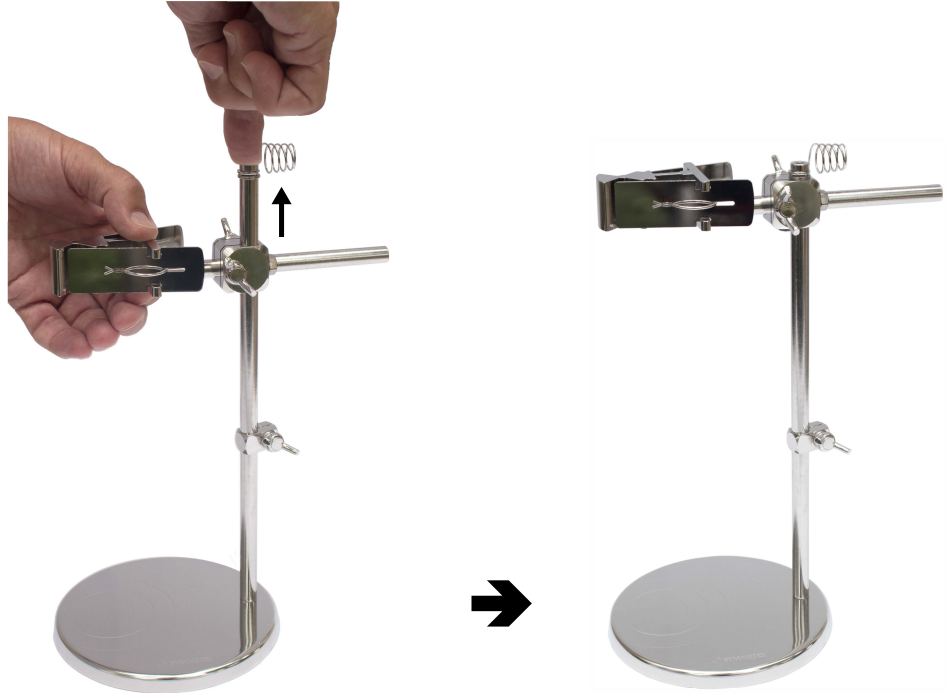
OPERATING INSTRUCTIONS FOR THE SE413 PROBE HOLDER

SY429 • November 2023

How to assemble the holder you may see in the document "Assembling the SE413 Probe Holder".

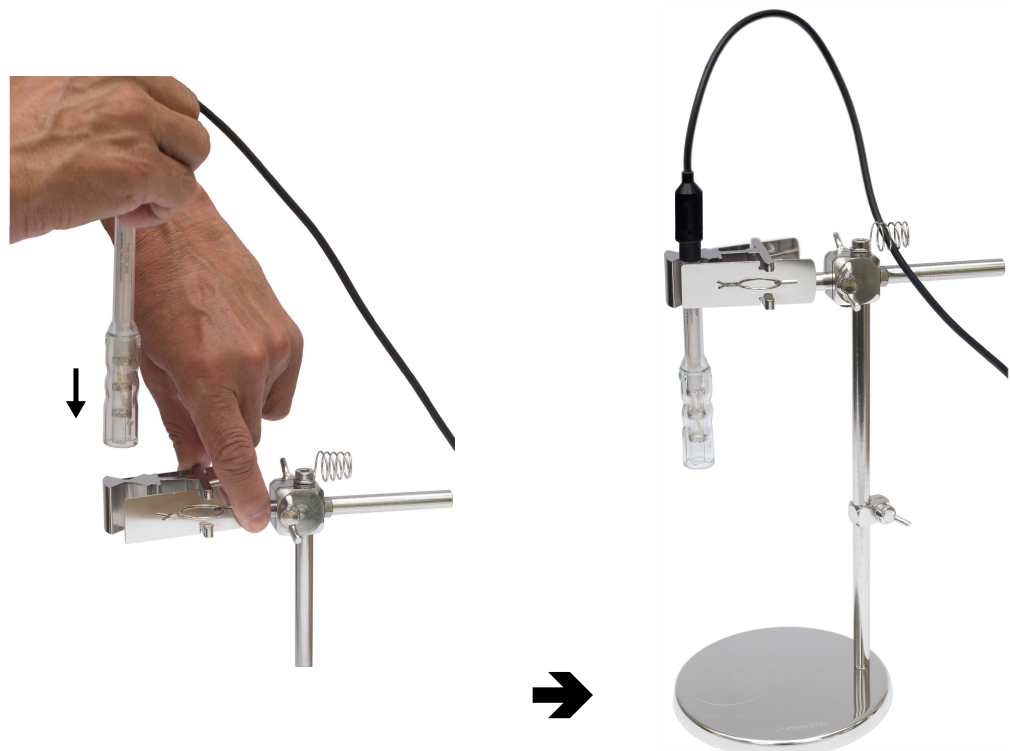
Step 1

Pull the horizontal bar assembly along the vertical bar to the uppermost position, then secure the assembly with the wing screw.



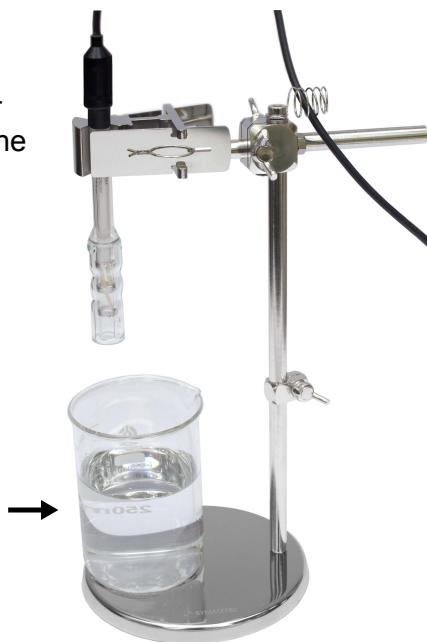
Step 2

Tighten the probe (or probes) into the groove (or grooves) of the horizontal bar assembly, and strain the probe cable into the spring at the top of holder.



Step 3

At the base of holder place a labware on the center of engraved circles.



Step 4

Lower the horizontal rod assembly so that the probe reaches the desired position in the labware, then fasten the assembly with the wing screw. The lower position of the probe can be set with the lowering stop. The position of the probe in the labware can be adjusted by moving the horizontal rod assembly: up-down, forward-backward, and rotate around the screw that fasten the vertical rod on the base.

